




Climatic Bulletin

November 2019

 **Max
temperature**

 **Min
temperature**

 **Mean
temperature**

 **Precipitation**

 **Sunshine
duration**

November was a warm month but its main characteristic was the high amounts of precipitation which recorded almost every part of the country. The succession deep barometric lows which affected the whole Greek area quite often caused intensive local floods over mainland and over islands as well.



ΕΘΝΙΚΗ
ΜΕΤΕΩΡΟΛΟΓΙΚΗ
ΥΠΗΡΕΣΙΑ
HELLENIC NATIONAL METEOROLOGICAL SERVICE



Temperature

First 10-day period

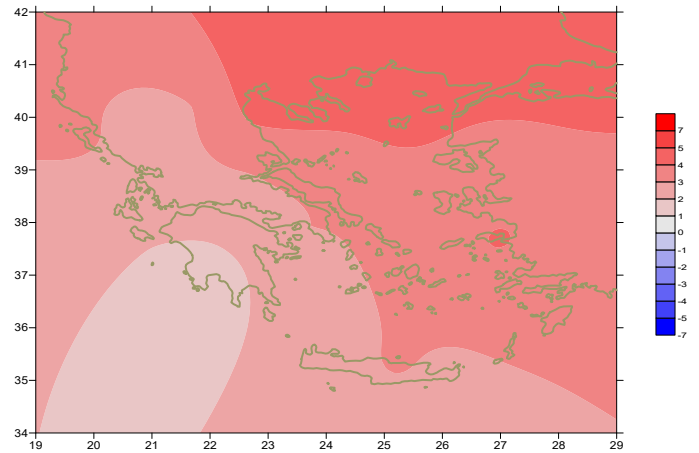
More specific (varied) :

Minimum:

from 2°C to 16°C over north mainland,
 from 6°C to 20°C over central mainland,
 from 8°C to 21°C over rest parts.

Maximum:

from 11°C to 24°C over north mainland,
 from 17°C to 26°C over central mainland,
 from 16°C to 29°C over rest parts.



Deviation of mean temperature from normal values

Second 10-day period

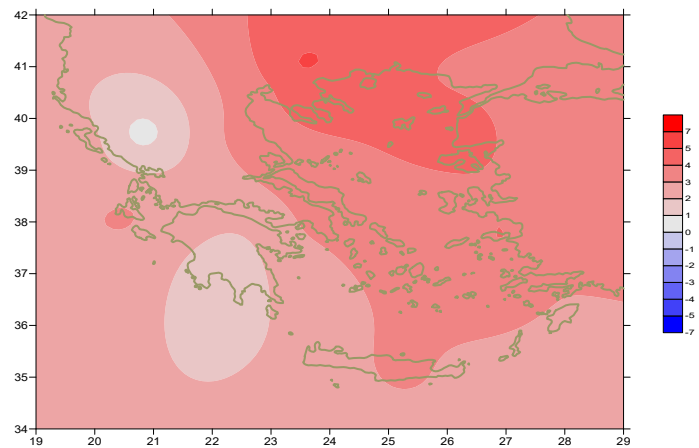
More specific (varied) :

Minimum:

from -1°C to 16°C over north mainland,
 from 3°C to 18°C over central mainland,
 from 11°C to 21°C over rest parts.

Maximum:

from 14°C to 22°C over north mainland,
 from 16°C to 24°C over central mainland,
 from 19°C to 25°C over rest parts.



Deviation of maximum temperature from normal values

Third 10-day period

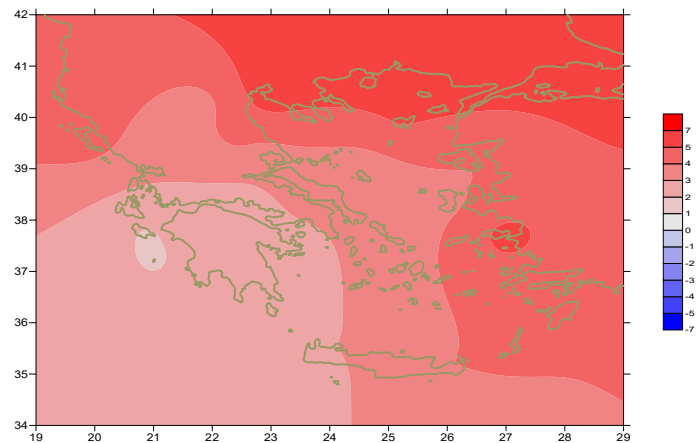
More specific (varied) :

Minimum:

from 0°C to 15°C over north mainland,
 from 4°C to 17°C over central mainland,
 from 11°C to 19°C over rest parts.

Maximum:

from 10°C to 21°C over north mainland,
 from 13°C to 24°C over central mainland,
 from 16°C to 23°C over rest parts.



Deviation of minimum temperature from normal values



P r e c i p i t a t i o n

First 10-day period

Locally very high amounts of precipitation.
More specific:

36mm in Ioannina, 39mm in Araxos, 33mm in Adravida,
32mm in Kalamata, 30mm in Rodos (4/11),
31mm in Preveza, 47mm in Ioannina, 35mm in Konitsa,
44mm in Kerkira, 40mm in Othonoi (6/11),
43mm in Preveza, 45mm in Ioannina (8/11),
40mm in Aktio, 48mm in Kerkira (10/11).

Second 10-day period

Locally very high amounts of precipitation.
More specific:

47mm in Paleochora (11/11), 36mm in Tanagra, 39mm in Karistos,
54mm in Kerkira, 64mm in Milos, 34mm in Heraklion,
55mm in Souda, 66mm in Kasteli, 48mm in Spata,
50mm in Tatoi, 55mm in Hellinikon, 37mm in Elefsina, 47mm in Kotroni,
48mm in Rafina, 47mm in Shiniyas, 52mm In Lavrio, 57mm in Nat. Kolimvitirio(13/11),
49mm in Doxato, 58mm in Kerkira, 35mm in Rodos (14/11),
89mm in Santorini (18/11),
93mm in Zakynthos, 60mm in Adravida, 43mm in Araxos, 68mm in Messologi (20/11).

Third 10-day period

Locally significant amounts of precipitation.
More specific:

30mm in Alexandroupoli, 33mm in Kavala, 71mm in Limnos,
42mm in Kotroni (21/11), 75mm in Chrissoupoli, 57mm in Doxato (22/11),
40mm in Argostoli, 49mm in Kranea, 34mm in Desfina, 45mm in Tithorea,
36mm in Karistos, 65mm In Chios, 34mm in Samos,
87mm in Rodos, 39mm in Rafina (25/11),
45mm in Zakynthos, 31mm in Gavdos, 51mm in Limnos (26/11).

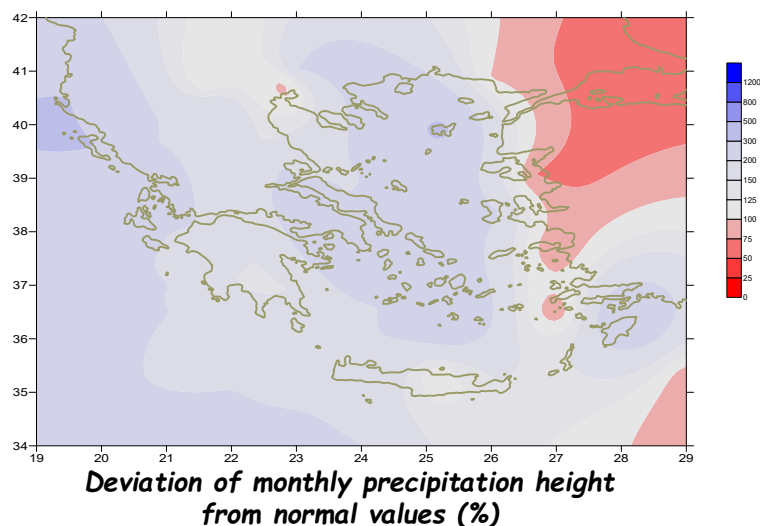


TABLE OF MEAN VALUES

STATION	Longitude	Latitude	Tmean	TX	TN	RR	INST
SERRES	23,53	41,07	13,9	18,8	10	119	99
FLORINA	21,40	40,78					
KASTORIA	21,27	40,45	10,6	15,3	6,8	140	69
TRIKALA_IMATHIAS	22,55	40,60					
THESSALONIKI	22,97	40,52	15,6	19,3	12,2	54	112
CHRYSOUPOLI	24,62	40,92	14,9	18,8	11,3	228	107
ALEXANDROUPOLI	25,95	40,85	15,5	19	12,4	66	111
KOZANI	21,83	40,28	11,1	15,6	7,4	110	
KERKYRA	19,92	39,62	17,4	21,1	14,4	438	87
IOANNINA	20,82	39,70	12	16,4	8,4	340	54
PREVEZA	20,76	38,91	16,9	20,7	13,7	294	
TRIKALA_THESSALIAS	21,77	39,52					
LARISA	22,45	39,65	14,6	19,4	10	75	90
LIMNOS	25,23	39,92	16,9	19,9	14,2	244	150
ARTA	21,00	39,17					
AGHIALOS	22,78	39,21	15,3	20,2	11,3	95	135
MYTILINI	26,60	39,05	18	21,3	15,5	58	159
VELO	22,77	37,97					
AGRINIO	21,35	38,60					
LAMIA	22,43	38,87					
ANDRAVIDA	21,28	37,92	16,9	22,1	12,7	257	142
SKYROS	24,48	38,96	17,8	20,6	15,4	86	160
ARGOSTOLI	20,50	38,12	18,1	21,8	15	277	156
ARAXOS	21,42	38,15	16,9	21,5	12,9	205	158
TANAGRA	23,57	38,33	15,9	20,9	11,2	139	150
HIOS	26,13	38,35	17,3	21	13,8	154	158
PYRGOS	21,42	37,67					
TRIPOLI	22,40	37,52	12,1	17,2	7,1	167	115
TATOI	23,78	38,10	15,7	20,2	11,8	126	
HELLINIKO	23,73	37,90	18,4	22,1	15	116	159
ELEYSINA	23,55	38,07	17,3	21,6	13,6	105	
ZAKYNTHOS	20,88	37,75	17,9	21,7	14,4	274	161
SAMOS	26,92	37,68	18,6	21,8	16	83	
ARGOS	22,75	37,63					
KALAMATA	22,02	37,07	16,3	22	12	189	138
NAXOS	25,37	37,10					
METHONI	21,70	36,82					
MHLOS	24,43	36,73					
SPATA	23,95	37,95	17,8	20,9	12,2	185	
KOS	27,08	36,80	19,2	22,3	16,9	34	
KYTHIRA	22,98	36,15					
SANTORINI	25,41	36,41					
SOUDA	24,12	35,55	18,2	22	14,9	107	148
RODOS	28,08	36,40	19,7	23	17,2	240	188
MYKONOS	25,35	37,43	18,1	20,9	16,7	49	
HRAKLEIO	25,18	35,33	19,7	23,5	16,6	58	187
IERAPETRA	25,73	35,02					
SITEIA	26,10	35,21	19,6	23,2	17,7	67	
RETHYMNO	24,50	35,36					
TYMPAKI	24,76	35,06					
KASTELI	25,33	35,18	16,9	21,3	13,2	110	182
KARPATOS	27,15	35,42	20,9	23,3	19,3	27	
PAROS	25,13	37,02	18,8	22	16,6	104	178
SYROS	24,95	37,42	18,9	21,6	16,6	38	177
IKARIA	26,35	37,68					

11,314,58,13617810,214,16,45611,314,57,89612510,713,7820210,5165,88616112,715,410,232137

**TABLE OF DEVIATIONS
FROM NORMAL VALUES**

STATION	TMEAN	PRECI
	(deviation)	(deviation %)
	(I)	(II)
SERRES	4.8	222
FLORINA		
THESSALONIKI	4.7	94
ALEXANDROUPOLI	4.5	87
KOZANI	3.1	183
KERKYRA	3.2	243
IOANNINA	2.3	280
LARISA	3.8	129
LIMNOS	4.6	324
AGHIALOS	3.2	151
MYTILINI	3.5	62
AGRINIO		
SKYROS	3.1	160
ARGOSTOLI	2.4	171
ARAXOS	2.3	155
HIOS	3.5	186
HELLINIKO	3	247
ZAKYNTHOS	2.1	172
SAMOS	4.1	75
KALAMATA	1.6	133
NAXOS		
METHONI		
SANTORINI		
SOUDA	2.6	147
RODOS	3.3	272
HERAKLIO	3.1	99
SITIA	2.8	110

(I) deviation of mean temperature from normal values
 (II) deviation of monthly precipitation height from normal values %.

Climatic Bulletin

General Description

Precipitation amounts were higher enough than normal values over most parts.
The mean temperature varied higher than normals everywhere.

Climatic Parameters :

- ❖ **Normal Values** : normal values for various parameters (temperature, precipitation, etc) are defined as mean values calculated for 30 years. These normal values are used as basis and represent the mean situation. They can be specified in 10 daily, monthly, seasonally and yearly level and are used for the trend comparison of 10 days, month, season or year as: rainy decameron, mild winter, cool August etc.

Measurement :

- ❖ **Precipitation**
1 mm = 1 litre/m²

Table Legend :

Tmean : Mean Temperature
TN : Minimum Temperature
TX : Maximum Temperature
RR : Precipitation height(mm)
INST : Sun Duration (hours)

UTC hours (Universal Time Coordinates) in Greece :

- ❖ Winter : UTC hour = local hour - 2
- ❖ Summer : UTC hour = local hour - 3

© Hellenic National Meteorological Service
Reproduction is prohibited without written authorization
14 El.Venizelou 16777
Helliniko, Athens
Greece