




Climatic Bulletin

December 2019

 **Max
temperature**

 **Min
temperature**

 **Mean
temperature**

 **Precipitation**

 **Sunshine
duration**

December was a warm month till last week with a lot of rainfalls but few snowfalls over high enough plateaus. In contrast at the end of month, due to prevailing of extremely cold air masses over Greece, the temperature declined rapidly, intense snowfalls covered the mountainous parts of central and southern country while northern strong gale force winds prevailed over Aegean area.

Also very strong rainfalls and thunderstorms recorded over south Aegean area and Crete island.



Temperature

First 10-day period

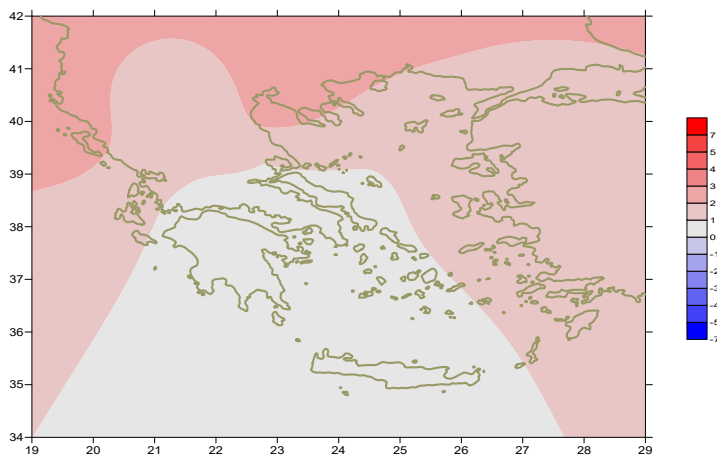
More specific (varied) :

Minimum:

from -6°C to 9°C over north mainland,
 from -2°C to 13°C over central mainland,
 from 5°C to 17°C over rest parts.

Maximum:

from 2°C to 16°C over north mainland,
 from 0°C to 23°C over central mainland,
 from 8°C to 22°C over rest parts.



Deviation of mean temperature from normal values

Second 10-day period

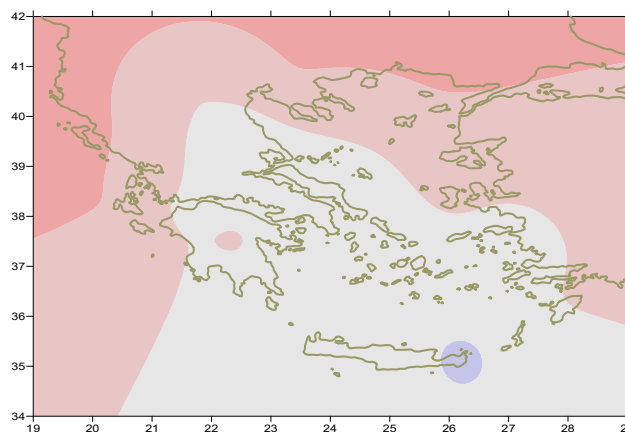
More specific (varied) :

Minimum:

from -5°C to 12°C over north mainland,
 from -1°C to 15°C over central mainland,
 from 7°C to 16°C over rest parts.

Maximum:

from 2°C to 19°C over north mainland,
 from 3°C to 22°C over central mainland,
 from 15°C to 22°C over rest parts.



Deviation of maximum temperature from normal values

Third 10-day period

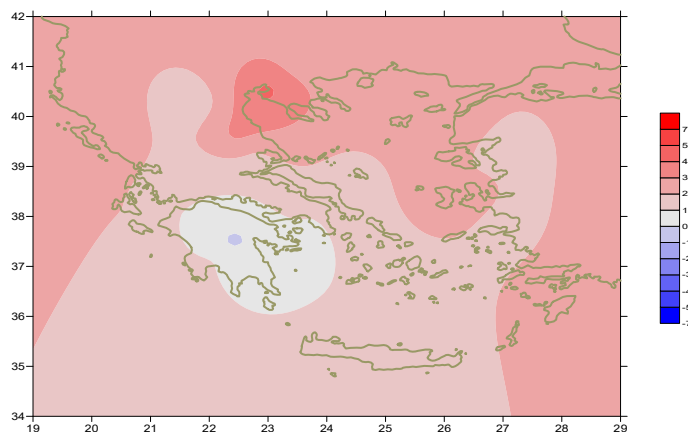
More specific (varied) :

Minimum:

from -8°C to 15°C over north mainland,
 from -5°C to 17°C over central mainland,
 from 5°C to 17°C over rest parts.

Maximum:

from 0°C to 20°C over north mainland,
 from 0°C to 22°C over central mainland,
 from 8°C to 20°C over rest parts.



Deviation of minimum temperature from normal values



Precipitation

First 10-day period

Locally very high amounts of precipitation.
More specific:

17mm in Ormenio, 18mm in Doxato, 22mm in Thessaloniki, 29mm in Preveza, 24mm in Oreoi, 20mm in Sofades (4/12), 33mm in Kerkira, 50mm in Argostoli, 55mm in Zakynthos, 35mm in Othonoi, 43mm in Adravida, 28mm in Methoni, 37mm in Karistos, 26mm in Skiros, 28mm in Argos, 53mm in Lavrio (10/12).

Second 10-day period

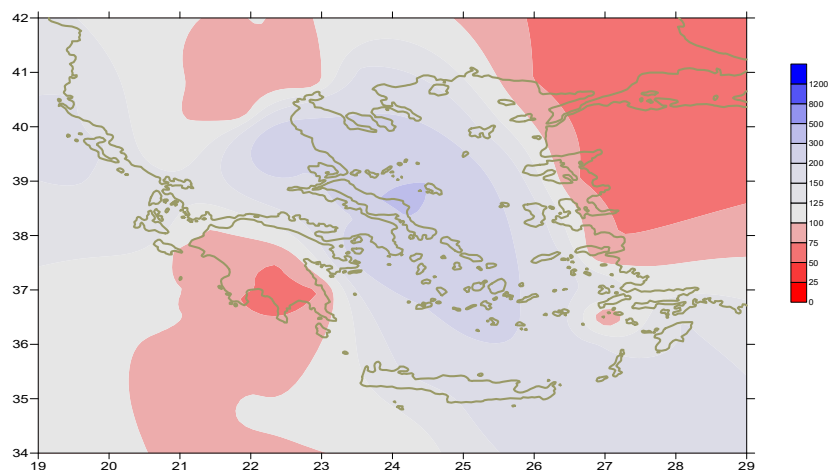
Locally very high amounts of precipitation.
More specific:

26mm in Florina, 65mm in Larisa, 34mm in Sofades, 54mm in Kranea, 46mm in Aghialos, 42mm in Skiros, 40mm in Chios, 29mm in Spata, 52mm in Kotroni, 39mm in Shinias (11/12), 52mm in Lavrio (12/12), 47mm in Mitilini, 30mm in Kastelorizo (13/12), 60mm in Preveza, 37mm in Ioannina, 43mm in Kerkira, 32mm in Adravida, 42mm in Oreoi, 30mm in Gavdos, 50mm in Kastelorizo (14/12), 28mm in Rodos (15/12).

Third 10-day period

Locally very high amounts of precipitation.
More specific:

42mm in Ioannina (22/12), 31mm in Alexandroupoli, 33mm in Tripoli, 33mm in Kasteli (23/12), 32mm in Sitia (24/12), 36mm in Souda, 42mm in Shinias (29/12), 65mm in Karistos, 72mm in Tanagra, 47mm in Tinos, 28mm in Heraklion, 36mm in Sitia, 88mm in Kasteli, 42mm in Tatoi, 130mm in Rodos, 43mm in Elefsina, 39mm in Kotroni, 28mm in Lavrio (30/12), 45mm in Oreoi, 43mm in Karistos (31/12).



**Deviation of monthly precipitation height
from normal values (%)**

TABLE OF MEAN VALUES

STATION	Longitude	Latitude	Tmean	TX	TN	RR	INST
SERRES	23,53	41,07	7,3	11,2	3,3	65	82
FLORINA	21,40	40,78					
KASTORIA	21,27	40,45	5	9,6	0,8	55	98
TRIKALA_IMATHIAS	22,55	40,60					
THESSALONIKI	22,97	40,52	9,6	12,4	7	67	83
CHRYSOUPOLI	24,62	40,92	9	12,8	5,3	49	101
ALEXANDROUPOLI	25,95	40,85	8,9	12,9	5,4	50	98
KOZANI	21,83	40,28	4,6	8,8	1,5	41	
KERKYRA	19,92	39,62	13,4	17,7	9,7	193	110
IOANNINA	20,82	39,70					
PREVEZA	20,76	38,91	12,3	15,6	10	208	
TRIKALA_THESSALIAS	21,77	39,52					
LARISA	22,45	39,65	8,1	11,4	5,1	135	65
LIMNOS	25,23	39,92	11,3	14	8,7	97	96
ARTA	21,00	39,17					
AGHIALOS	22,78	39,21	9	13,1	6,2	98	95
MYTILINI	26,60	39,05	12,6	15,2	10,6	99	120
VELO	22,77	37,97					
AGRINIO	21,35	38,60					
LAMIA	22,43	38,87					
ANDRAVIDA	21,28	37,92	12,2	16,9	8,4	190	116
SKYROS	24,48	38,96	12,6	14,7	10,8	210	81
ARGOSTOLI	20,50	38,12	14,3	17,5	12	147	147
ARAXOS	21,42	38,15	12,2	16,1	8,7	127	151
TANAGRA	23,57	38,33	9,9	13,9	6,7	141	94
HIOS	26,13	38,35	12,6	15,5	10,2	130	98
PYRGOS	21,42	37,67					
TRIPOLI	22,40	37,52	7,1	12,2	2,6	57	104
TATOI	23,78	38,10	10	13,8	7,1	178	
HELLINIKO	23,73	37,90	12,6	15,6	9,8	181	131
ELEYSINA	23,55	38,07	11,5	15,1	8,5	141	
ZAKYNTHOS	20,88	37,75	13,8	17,1	11,1	132	139
SAMOS	26,92	37,68	12,4	15,6	10,1	126	
ARGOS	22,75	37,63					
KALAMATA	22,02	37,07	12,1	17,6	8,3	111	157
NAXOS	25,37	37,10					
METHONI	21,70	36,82					
MHLOS	24,43	36,73					
SPATA	23,95	37,95	12	15	7,3	117	
KOS	27,08	36,80	13,8	16,2	11,8	84	
KYTHIRA	22,98	36,15					
SANTORINI	25,41	36,41					
SOUDA	24,12	35,55	13	16,4	10,6	126	128
RODOS	28,08	36,40	15,2	17,7	13,2	192	170
MYKONOS	25,35	37,43	13,8	16,1	12,5	47	
HRAKLEIO	25,18	35,33	14,2	17,6	12	124	130
IERAPETRA	25,73	35,02					
SITEIA	26,10	35,21	14,5	17,1	12,7	160	147
RETHYMNO	24,50	35,36					
TYMPAKI	24,76	35,06					
KASTELI	25,33	35,18	11,4	15	8,4	201	122
KARPATIOS	27,15	35,42	15,8	18,5	13,9	95	
PAROS	25,13	37,02	13,8	16,6	11,9	104	137
SYROS	24,95	37,42	13,9	16,1	12,4	11	131
IKARIA	26,35	37,68					

11,314,58,13617810,214,16,45611,314,57,89612510,713,7820210,5165,88616112,715,410,232137

**TABLE OF DEVIATIONS
FROM NORMAL VALUES**

STATION	TMEAN (deviation) (I)	PRECI (deviation %) (II)
SERRES	2.4	148
FLORINA		
THESSALONIKI	2.9	127
ALEXANDROUPOLI	1.9	58
KOZANI	1	75
KERKYRA	2.3	107
IOANNINA		
LARISA	1.8	258
LIMNOS	2	121
AGHIALOS	1	154
MYTILINI	1.3	68
AGRINIO		
SKYROS	0.9	269
ARGOSTOLI	1.4	117
ARAXOS	0.7	97
HIOS	1.5	113
HELLINIKO	0.6	273
ZAKYNTHOS	1	78
SAMOS	0.3	77
KALAMATA	0.5	72
NAXOS		
METHONI		
SANTORINI		
SOUDA	0.4	134
RODOS	1.8	132
HERAKLIO	0.4	161
SITIA	0.5	180

(I) deviation of mean temperature from normal values
 (II) deviation of monthly precipitation height from normal values %.

Climatic Bulletin

General Description

Precipitation amounts were higher than normal values in general. In contrast they were lower over Thrace and over few parts of Macedonia.
The mean temperature varied higher than normals everywhere.

Climatic Parameters :

- ❖ **Normal Values** : normal values for various parameters (temperature, precipitation, etc) are defined as mean values calculated for 30 years. These normal values are used as basis and represent the mean situation. They can be specified in 10 daily, monthly, seasonally and yearly level and are used for the trend comparison of 10 days, month, season or year as: rainy decameron, mild winter, cool August etc.

Measurement :

- ❖ **Precipitation**
1 mm = 1 litre/m²

Table Legend :

Tmean : Mean Temperature
TN : Minimum Temperature
TX : Maximum Temperature
RR : Precipitation height(mm)
INST : Sun Duration (hours)

UTC hours (Universal Time Coordinates) in Greece :

- ❖ Winter : UTC hour = local hour - 2
- ❖ Summer : UTC hour = local hour - 3

© Hellenic National Meteorological Service
Reproduction is prohibited without written authorization
14 El.Venizelou 16777
Helliniko, Athens
Greece