




# Climatic Bulletin

April 2021

 Max  
temperature

 Min  
temperature

 Mean  
temperature

 Precipitation

 Sunshine  
duration

April was a slightly cold month with the mean temperature values keeping lower than normal ones over most parts with the exception of Crete.

Also the precipitation amounts were lower enough than normal levels mainly over east and south parts.

Meanwhile gale force winds prevailed over Greek seas for a long time. In addition a significant episode of African dust transportation took place at the end.



# Temperature

### First 10-day period

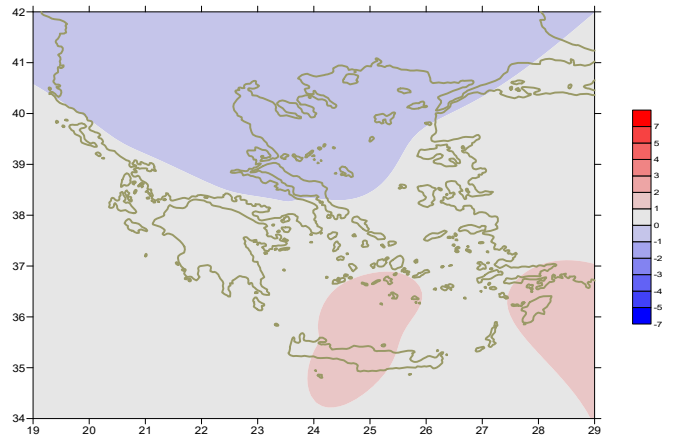
More specific (varied) :

**Minimum:**

from  $-7^{\circ}\text{C}$  to  $12^{\circ}\text{C}$  over north mainland,  
 from  $-3^{\circ}\text{C}$  to  $14^{\circ}\text{C}$  over central mainland,  
 from  $+3^{\circ}\text{C}$  to  $22^{\circ}\text{C}$  over rest parts.

**Maximum:**

from  $6^{\circ}\text{C}$  to  $24^{\circ}\text{C}$  over north mainland,  
 from  $10^{\circ}\text{C}$  to  $26^{\circ}\text{C}$  over central mainland,  
 from  $9^{\circ}\text{C}$  to  $28^{\circ}\text{C}$  over rest parts.



*Deviation of mean temperature from normal values*

### Second 10-day period

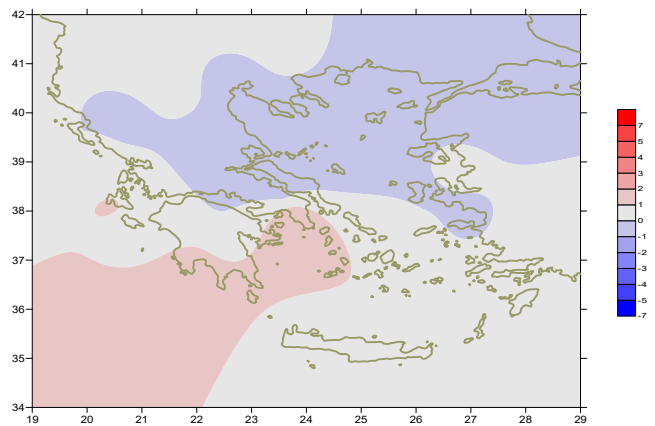
More specific (varied) :

**Minimum:**

from  $-2^{\circ}\text{C}$  to  $11^{\circ}\text{C}$  over north mainland,  
 from  $-1^{\circ}\text{C}$  to  $13^{\circ}\text{C}$  over central mainland,  
 from  $+2^{\circ}\text{C}$  to  $18^{\circ}\text{C}$  over rest parts.

**Maximum:**

from  $8^{\circ}\text{C}$  to  $25^{\circ}\text{C}$  over north mainland,  
 from  $8^{\circ}\text{C}$  to  $23^{\circ}\text{C}$  over central mainland,  
 from  $15^{\circ}\text{C}$  to  $25^{\circ}\text{C}$  over rest parts.



*Deviation of maximum temperature from normal values*

### Third 10-day period

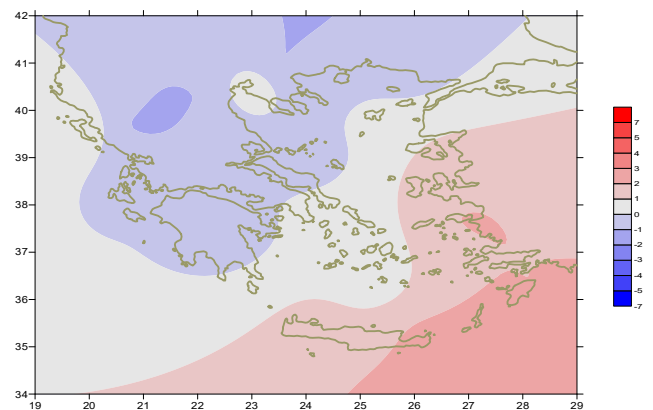
More specific (varied) :

**Minimum:**

from  $-1^{\circ}\text{C}$  to  $13^{\circ}\text{C}$  over north mainland,  
 from  $0^{\circ}\text{C}$  to  $13^{\circ}\text{C}$  over central mainland,  
 from  $4^{\circ}\text{C}$  to  $17^{\circ}\text{C}$  over rest parts.

**Maximum:**

from  $9^{\circ}\text{C}$  to  $31^{\circ}\text{C}$  over north mainland,  
 from  $12^{\circ}\text{C}$  to  $32^{\circ}\text{C}$  over central mainland,  
 from  $16^{\circ}\text{C}$  to  $30^{\circ}\text{C}$  over rest parts.



*Deviation of minimum temperature from normal values*



## Precipitation

### First 10-day period

Locally significant amounts of precipitation.

More specific:

10mm in Santorini, 24mm in Iraklion, 30mm in Souda,  
14mm in Timbaki, 16mm in Kasteli (1/4),  
13mm in Ormenio, 27mm in Soufli (4/4),  
14mm in Alexandroupoli, 23mm in Mitilini (5/4),  
18mm in Ormenio (8/4).

### Δεύτερο δεκαήμερο/Second 10-day period

Locally small amounts of precipitation.

More specific:

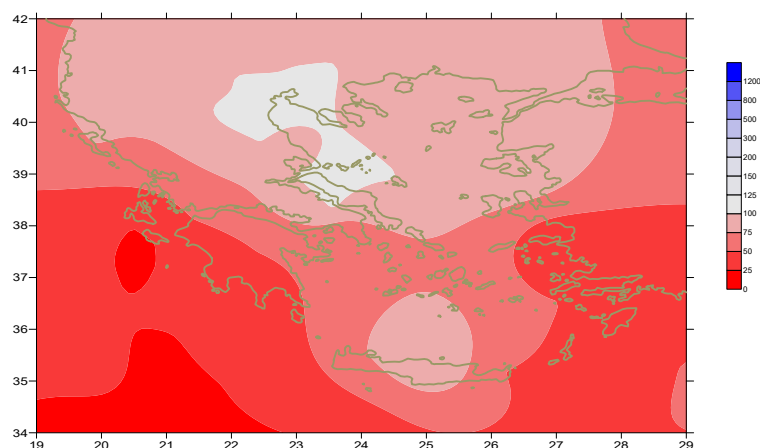
24mm in Doxato, 37mm in Kavala,  
16mm in Xanthi, 16mm in Serres,  
8mm in Mikinos, 11mm in Siros, 13mm in Chios (19/4),  
8mm in Kerkira (20/4).

### Third 10-day period

Locally significant amounts of precipitation in the middle of the period.

More specific:

10mm in Thessaloniki, 12mm in Kastoria (23/4),  
25mm in Kozani, 14mm in Ioannina, 19mm in Larisa,  
17mm in Kastoria, 13mm in Antirio, 16mm in Sofades, 24mm in Kranea,  
37mm in Tithorea, 18mm in Karistos, 14mm in Skiros,  
23mm in Tanagra, 14mm in Tripoli, 11mm in Argos,  
16mm in Spata, 17mm in Tatoi, 12mm in Hellinikon,  
20mm in Elefsina, 18mm in Kotroni,  
16mm in New Filadelfia, 15mm in Olympic Stadium(24/4),  
14mm in Skiathos (25/4).



Deviation of monthly precipitation height  
from normal values (%)

TABLE OF MEAN VALUES

STATION	Longitude	Lattitude	Tmean	TX	TN	RR	INST
RRES	23,53	41,07	13,9	20,4	6,8	31	202
FLORINA	21,40	40,78					
KASTORIA	21,27	40,45	11,4	17,5	3,6	38	209
TRIKALA_IMATHIAS	22,55	40,60					
THESSALONIKI	22,97	40,52	14	18,2	7,9	29	222
CHRYSOUPOLI	24,62	40,92	13	16,5	7,6	58	206
ALEXANDROUPOLI	25,95	40,85	12,7	16,3	6,4	23	207
KOZANI	21,83	40,28	11,4	17	4,3	43	
KERKYRA	19,92	39,62	15,2	19,2	10	27	234
IOANNINA	20,82	39,70	12,4	17,9	4,9	47	205
PREVEZA	20,76	38,91	15,8	19,6	10,3	12	
TRIKALA_THESSALIAS	21,77	39,52					
LARISA	22,45	39,65	13,6	19,3	5,8	25	218
LIMNOS	25,23	39,92	13,6	16,7	9,1	19	214
ARTA	21,00	39,17					
AGHIALOS	22,78	39,21	14,1	18,2	7,3	23	224
MYTILINI	26,60	39,05	16,3	19,5	12,8	43	220
VELO	22,77	37,97					
AGRINIO	21,35	38,60					
LAMIA	22,43	38,87					
ANDRAVIDA	21,28	37,92	15,7	20,6	8,6	11	259
SKYROS	24,48	38,96	14,4	17	11,3	22	212
ARGOSTOLI	20,50	38,12	16,1	19,5	11,2	3	256
ARAXOS	21,42	38,15	15,7	19,7	9,5	13	252
TANAGRA	23,57	38,33	14,5	19,2	7	26	220
HIOS	26,13	38,35	15,9	18,6	11,4	26	218
PYRGOS	21,42	37,67					
TRIPOLI	22,40	37,52	12	17,4	4,1	17	232
TATOI	23,78	38,10					
HELLINIKO	23,73	37,90	16,7	21,3	11,9	14	248
ELEYSINA	23,55	38,07	16,4	20,5	10,6	20	
ZAKYNTHOS	20,88	37,75	15,8	19,3	11	9	232
SAMOS	26,92	37,68	16,7	19,7	12,7	7	
ARGOS	22,75	37,63					
KALAMATA	22,02	37,07	15,9	21,5	8,6	3	250
NAXOS	25,37	37,10					
METHONI	21,70	36,82					
MHLOS	24,43	36,73					
SPATA	23,95	37,95					
KOS	27,08	36,80	16,4	19,8	13,1	2	
KYTHIRA	22,98	36,15					
SANTORINI	25,41	36,41	16,8	19,1	12,8	10	216
SOUDA	24,12	35,55	16,8	20,5	12,6	23	242
RODOS	28,08	36,40	17,9	20,8	14,6	2	245
MYKONOS	25,35	37,43	16,3	19,2	14,2	9	
HRAKLEIO	25,18	35,33	17,8	21	13,4	24	252
IERAPETRA	25,73	35,02					
SITEIA	26,10	35,21	17,3	20,6	14,9	8	214
RETHYMNO	24,50	35,36					
TYMPAKI	24,76	35,06					
KASTELI	25,33	35,18	15,8	20,4	10,9	20	231
KARPATOS	27,15	35,42					
PAROS	25,13	37,02	16,5	19,6	14,4	4	226
SYROS	24,95	37,42	16	19,1	13,5	8	228
IKARIA	26,35	37,68					

11,314,58,13617810,214,16,45611,314,57,89612510,713,7820210,5165,88616112,715,410,232137

**TABLE OF DEVIATIONS  
FROM NORMAL VALUES**

STATION	TMEAN ( deviation ) (I)	PRECI ( deviation % ) (II)
SERRES	-0.4	87
FLORINA		
THESSALONIKI	-0.2	80
ALEXANDROUPOLI	-0.5	58
KOZANI	-0.5	107
KERKYRA	0.1	44
IOANNINA	-0.2	62
LARISA	-0.4	87
LIMNOS	-0.2	59
AGHIALOS	-0.1	67
MYTILINI	0.5	92
AGRINIO		
SKYROS	-0.8	100
ARGOSTOLI	0.7	5
ARAXOS	0.3	31
HIOS	0.6	63
HELLINIKO	0.7	57
ZAKYNTHOS	0.3	18
SAMOS	0.6	22
KALAMATA	0.5	6
NAXOS		
METHONI		
SANTORINI	1.2	52
SOUDA	1	72
RODOS	1.2	8
HERAKLIO	1.2	80
SITIA	0.5	29

(I) deviation of mean temperature from normal values  
 (II) deviation of monthly precipitation height from normal values %.

# Climatic Bulletin

## General Description

Precipitation amounts were lower than normal values mainly over east and south parts of Greece.  
The mean temperature varied lower than normal values in general, with the exception of Crete.

### Climatic Parameters :

- ❖ **Normal Values** : normal values for various parameters (temperature, precipitation, etc) are defined as mean values calculated for 30 years. These normal values are used as basis and represent the mean situation. They can be specified in 10 daily, monthly, seasonally and yearly level and are used for the trend comparison of 10 days, month, season or year as: rainy decameron, mild winter, cool August etc.

### Measurement :

- ❖ **Precipitation**  
1 mm = 1 litre/m<sup>2</sup>

### Table Legend :

T<sub>mean</sub> : Mean Temperature  
 TN : Minimum Temperature  
 TX : Maximum Temperature  
 RR : Precipitation height(mm)  
 INST : Sun Duration (hours)

### UTC hours (Universal Time Coordinates) in Greece :

- ❖ Winter : UTC hour = local hour - 2
- ❖ Summer : UTC hour = local hour - 3

© Hellenic National Meteorological Service  
 Reproduction is prohibited without written authorization  
 14 El.Venizelou 16777  
 Helliniko, Athens  
 Greece