




Climatic Bulletin

December 2021

 **Max
temperature**

 **Min
temperature**

 **Mean
temperature**

 **Precipitation**

 **Sunshine
duration**

December started with a warm week continued with a cold one and ended with a warm as well. Very large amounts of precipitation affected mainly Epirus area and the island of Crete. Meanwhile local floods and other kinds of damages recorded over the western parts of Greece. Also gale force north or south winds affected the whole country for a long time.



Temperature

First 10-day period

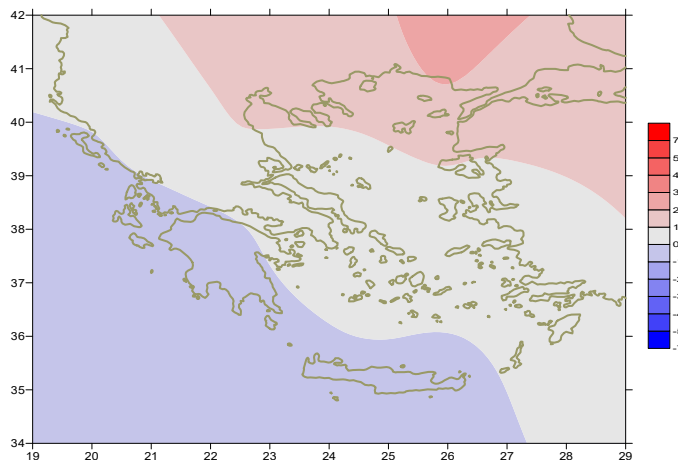
More specific (varied) :

Minimum:

from -8°C to 13°C over north mainland,
 from -2°C to 13°C over central mainland,
 from 3°C to 19°C over rest parts.

Maximum:

from 6°C to 19°C over north mainland,
 from 10°C to 22°C over central mainland,
 from 15°C to 20°C over rest parts.



Deviation of mean temperature from normal values

Second 10-day period

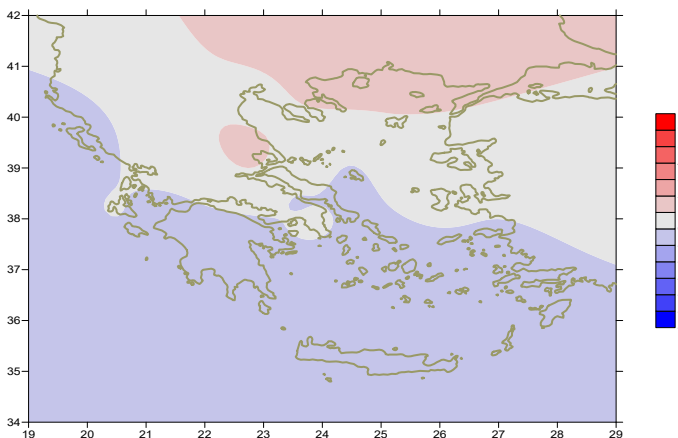
More specific (varied) :

Minimum:

from -6°C to 12°C over north mainland,
 from -3°C to 13°C over central mainland,
 from 7°C to 16°C over rest parts.

Maximum:

from 1°C to 17°C over north mainland,
 from 5°C to 19°C over central mainland,
 from 9°C to 19°C over rest parts.



Deviation of maximum temperature from normal values

Third 10-day period

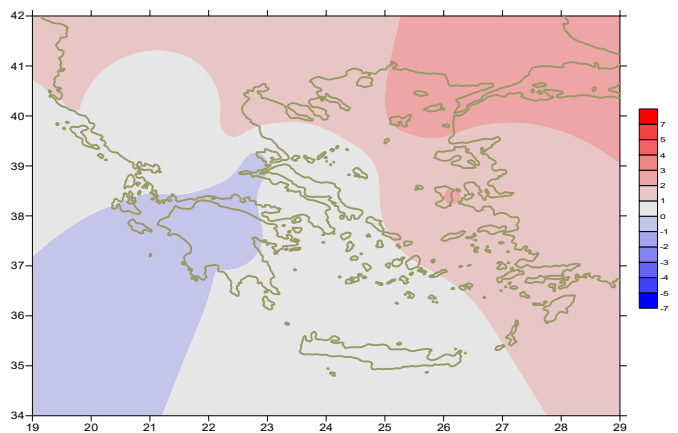
More specific (varied) :

Minimum:

from -10°C to 13°C over north mainland,
 from -5°C to 13°C over central mainland,
 from 1°C to 16°C over rest parts.

Maximum:

from 3°C to 16°C over north mainland,
 from 3°C to 18°C over central mainland,
 from 7°C to 18°C over rest parts.



Deviation of minimum temperature from normal values



P r e c i p i t a t i o n

First 10-day period

Large amounts of precipitation.

More specific:

103mm in Mesologi, 27mm in Ioannina (3/12),
24mm in Paleochora, 34mm in Ikaria (4/12),
33mm in Sitia, 46mm in Rodos (5/12),
53mm in Ioannina (6/12),
46mm in Chrissoupoli, 33mm in Argostoli, 25mm in Messologi,
26mm in Serres, 57mm in Mitilini, 23mm in Tatoi (7/12),
28mm in Ioannina, 23mm in Doxato, 22mm in Adravida,
27mm in Messologi, 35mm in Mitilini (10/12).

Δεύτερο δεκαήμερο Second 10-day period

Large amounts of precipitation..

More specific:

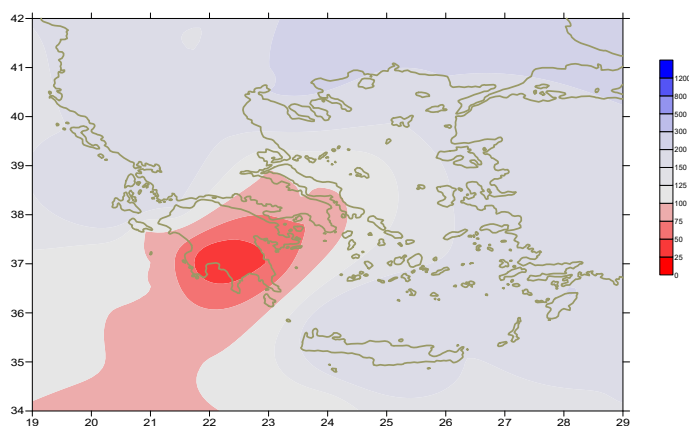
54mm in Kastoria, 58mm in Ioannina, 69mm in Adravida,
79mm in Zakynthos, 74mm in Araxos, 71mm in Messologi,
30mm in Kalamata, 37mm in Tripoli (11/12),
68mm in Mitilini, 25mm in Soufli (12/12),
47mm in Kalimnos, 28mm in Doxato, 27mm in Kavala (13/12),
22mm in Skiros (16/12),
36mm in Souda, 31mm in Oreoi, 26mm in Tithorea (18/12),
25mm in Heraklion, 39mm in Kasteli (19/12).

Third 10-day period

Large amounts of precipitation.

More specific:

41mm in Ioannina, 43mm in Konitsa, 26mm in Kerkira (26/12),
42mm in Argostoli, 17mm in Gavdos (28/12),
35mm in Alexandroupoli, 37mm in Paleochora, 69mm in Chios,
46mm in Rodos, 24mm in Mitilini (29/12),
44mm in Souda, 27mm in Ikaria, 48mm in Rodos (30/12),
35mm in Kasteli, 59mm in Rodos, 30mm in Kasos (31/12).



**Deviation of monthly precipitation height
from normal values (%)**

TABLE OF MEAN VALUES

STATION	Longitude	Latitude	Tmean	TX	TN	RR	INST
SERRES	23,53	41,07	6,4	10,9	1,9	103	104
FLORINA	21,40	40,78					
KASTORIA	21,27	40,45	4,1	8,1	0,1	106	107
TRIKALA_IMATHIAS	22,55	40,60					
THESSALONIKI	22,97	40,52	8,1	11,4	4,4	94	149
CHRYSOUPOLI	24,62	40,92	8,1	12,1	4,3	159	122
ALEXANDROUPOLI	25,95	40,85	9,1	12,2	5,7	159	106
KOZANI	21,83	40,28	4,4	8,7	0,8	61	
KERKYRA	19,92	39,62	11	15	7,7	185	114
IOANNINA	20,82	39,70					
PREVEZA	20,76	38,91	10,5	13,9	8	150	
TRIKALA_THESSALIAS	21,77	39,52					
LARISA	22,45	39,65	7,2	12	3	64	127
LIMNOS	25,23	39,92	10,7	13,4	8,3	108	110
ARTA	21,00	39,17					
AGHIALOS	22,78	39,21	8,5	13,7	4,2	27	154
MYTILINI	26,60	39,05	12,1	14,1	10,3	240	89
VELO	22,77	37,97					
AGRINIO	21,35	38,60					
LAMIA	22,43	38,87					
ANDRAVIDA	21,28	37,92	10,8	15,2	7,2	262	118
SKYROS	24,48	38,96	11,9	13,9	9,7	85	100
ARGOSTOLI	20,50	38,12	12,6	15,7	9,9	213	151
ARAXOS	21,42	38,15	11,2	14,9	7,5	188	147
TANAGRA	23,57	38,33	9,5	13,5	5,5	71	115
HIOS	26,13	38,35	12	14,5	9,5	172	92
PYRGOS	21,42	37,67					
TRIPOLI	22,40	37,52	6,5	10,6	2,5	64	116
TATOI	23,78	38,10	9,4	13,2	6	60	
HELLINIKO	23,73	37,90	12,5	15,4	9,3	43	134
ELEYSINA	23,55	38,07	11,4	14,7	7,6	29	
ZAKYNTHOS	20,88	37,75	11,8	15,2	8,9	162	138
SAMOS	26,92	37,68	12,3	14,9	9,9	-	
ARGOS	22,75	37,63					
KALAMATA	22,02	37,07	11,1	16,4	7,2	36	144
NAXOS	25,37	37,10					
METHONI	21,70	36,82					
MHLOS	24,43	36,73					
SPATA	23,95	37,95	11,5	15,6	7,7	66	
KOS	27,08	36,80	13,9	16,7	12,4	83	
KYTHIRA	22,98	36,15					
SANTORINI	25,41	36,41					
SOUDA	24,12	35,55	12,5	15,2	10	171	107
RODOS	28,08	36,40	14,2	16,4	12,2	295	128
MYKONOS	25,35	37,43	13,5	15	12,2	90	
HRAKLEIO	25,18	35,33	13,7	16,6	10,9	141	125
IERAPETRA	25,73	35,02					
SITEIA	26,10	35,21	13,7	16,5	11,6	120	134
RETHYMNO	24,50	35,36					
TYMPAKI	24,76	35,06					
KASTELI	25,33	35,18					
KARPATIOS	27,15	35,42	15,2	17,4	13,8	69	
PAROS	25,13	37,02	14	16,1	10,9	104	133
SYROS	24,95	37,42	13,1	15	11,2	54	131
IKARIA	26,35	37,68					

11,314,58,13617810,214,16,45611,314,57,89612510,713,7820210,5165,88616112,715,410,232137

**TABLE OF DEVIATIONS
FROM NORMAL VALUES**

STATION	TMEAN (deviation) (I)	PRECI (deviation %) (II)
SERRES	1.5	235
FLORINA		
THESSALONIKI	1.4	178
ALEXANDROUPOLI	2.1	183
KOZANI	0.8	112
KERKYRA	-0.1	103
IOANNINA		
LARISA	0.9	122
LIMNOS	1.4	135
AGHIALOS	0.5	42
MYTILINI	0.8	165
AGRINIO		
SKYROS	0.2	109
ARGOSTOLI	-0.3	170
ARAXOS	-0.3	144
HIOS	0.9	149
HELLINIKO	0.5	65
ZAKYNTHOS	-1	95
SAMOS	0.2	-
KALAMATA	-0.5	23
NAXOS		
METHONI		
SANTORINI		
SOUDA	-0.1	182
RODOS	0.8	203
HERAKLIO	-0.1	183
SITIA	-0.3	135

(I) deviation of mean temperature from normal values
 (II) deviation of monthly precipitation height from normal values %.

Climatic Bulletin

General Description

Precipitation amounts were higher enough than normal values over most parts mainly over Epirus and Crete.
The mean temperature varied close to normal values.

Climatic Parameters :

- ❖ **Normal Values** : normal values for various parameters (temperature, precipitation, etc) are defined as mean values calculated for 30 years. These normal values are used as basis and represent the mean situation. They can be specified in 10 daily, monthly, seasonally and yearly level and are used for the trend comparison of 10 days, month, season or year as: rainy decameron, mild winter, cool August etc.

Measurement :

- ❖ **Precipitation**
1 mm = 1 litre/m²

Table Legend :

T_{mean} : Mean Temperature
 TN : Minimum Temperature
 TX : Maximum Temperature
 RR : Precipitation height(mm)
 INST : Sun Duration (hours)

UTC hours (Universal Time Coordinates) in Greece :

- ❖ Winter : UTC hour = local hour - 2
- ❖ Summer : UTC hour = local hour - 3

© Hellenic National Meteorological Service
 Reproduction is prohibited without written authorization
 14 El.Venizelou 16777
 Helliniko, Athens
 Greece