




# Climatic Bulletin

April 2023

 **Max  
temperature**

 **Min  
temperature**

 **Mean  
temperature**

 **Precipitation**

 **Sunshine  
duration**

April characterized by alternation of high and low temperatures for the whole period. Also the mean precipitation values were higher than normal ones over the west, central and north parts. It is remarkable that significant amounts of snow recorded over the mountainous regions of mainland.



# Temperature

### First 10-day period

More specific (varied) :

**Minimum:**

from -2°C to 11°C over north mainland,  
 from -1°C to 14°C over central mainland,  
 from 0°C to 18°C over rest parts.

**Maximum:**

from 8°C to 23°C over north mainland,  
 from 9°C to 24°C over central mainland,  
 from 14°C to 26°C over rest parts.

### Second 10-day period

More specific (varied) :

**Minimum:**

from -1°C to 12°C over north mainland,  
 from 2°C to 16°C over central mainland,  
 from 6°C to 16°C over rest parts.

**Maximum:**

from 10°C to 23°C over north mainland,  
 from 13°C to 28°C over central mainland,  
 from 19°C to 23°C over rest parts.

### Third 10-day period

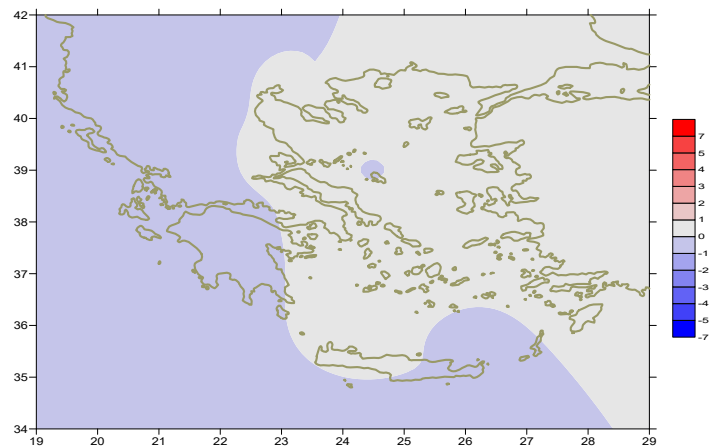
More specific (varied) :

**Minimum:**

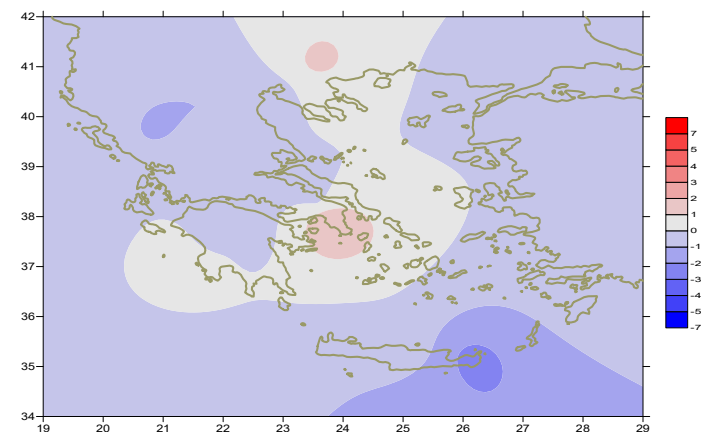
from 0°C to 12°C over north mainland,  
 from 2°C to 14°C over central mainland,  
 from 7°C to 17°C over rest parts.

**Maximum:**

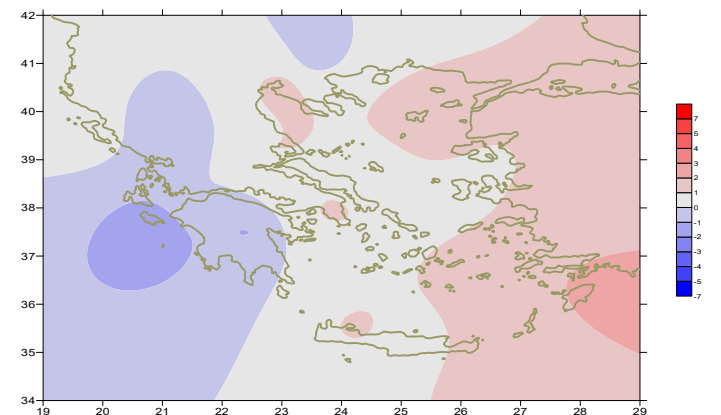
from 14°C to 24°C over north mainland,  
 from 16°C to 27°C over central mainland,  
 from 16°C to 22°C over rest parts.



*Deviation of mean temperature from normal values*



*Deviation of maximum temperature from normal values*



*Deviation of minimum temperature from normal values*



## P r e c i p i t a t i o n

### First 10-day period

Large amounts of precipitation.

More specific:

51mm in Thessaloniki, 21mm in Edessa, 41mm in Polikastro, 32mm in Kozani, 17mm in Argostoli, 21mm in Aghialos, 18mm in Larisa, 21mm in Sofades, 44mm in Kranea, 18mm in Tithorea, 23mm in Oreoi (3/4), 44mm in Ormenio, 15mm in Kavala, 17mm in Kerkira, 28mm in Aghialos, 53mm in Chios, 25mm in Limnos, 27mm in Mitilini (4/4), 18mm in Kavala (5/4), 14mm in Kalamata, 18mm in Chios (6/4), 13mm in Karpathos (7/4), 15mm in Kerkira, 36mm in Othonoi (9/4), 27mm in Mesologi, 15mm in Santorini (10/4).

### Second 10-day period

Large amounts of precipitation.

More specific:

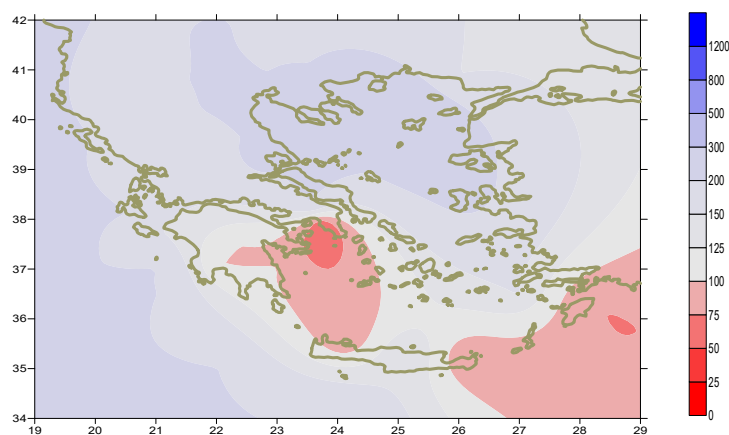
25mm in Heraklion (11 /4), 19mm in Preveza, 37mm in Argostoli, 29mm in Adravida, 17mm in Araxos (16/4), 25mm in Argostoli, 16mm in Mesologi (17/4), 15mm in Doxato, 23mm in Tithorea (18/4), 31mm in Limnos, 12mm in Mitilini (19/4).

### Third 10-day period

Significant amounts of precipitation.

More specific:

10mm in Kastoria, 20mm in Kozani, 15mm in Kotroni (22/4), 26mm in Santorini (23/4), 14mm in Kavala, 14mm in Ioannina (26/4).



**Deviation of monthly precipitation height  
from normal values (%)**

## TABLE OF MEAN VALUES

STATION	Longitude	Latitude	Tmean	TX	TN	RR	INST
SERRES	23,53	41,07	14,3	21,1	7,3	56	126
FLORINA	21,40	40,78					
KASTORIA	21,27	40,45	11	16,6	3,9	59	196
TRIKALA_IMATHIAS	22,55	40,60					
THESSALONIKI	22,97	40,52	14,8	18,8	8,8	80	233
CHRYSOUPOLI	24,62	40,92	13,6	17,2	8,8	71	178
ALEXANDROUPOLI	25,95	40,85	13,6	16,8	8,2	48	183
KOZANI	21,83	40,28	10,9	15,7	5,5	82	
KERKYRA	19,92	39,62	15	18,6	10,2	98	222
IOANNINA	20,82	39,70	11,6	17	5,1	79	173
PREVEZA	20,76	38,91	15,2	18,9	10,9	33	
TRIKALA_THESSALIAS	21,77	39,52					
LARISA	22,45	39,65	14,2	19,8	6,7	48	204
LIMNOS	25,23	39,92	14,1	17,2	10,5	94	216
ARTA	21,00	39,17					
AGHIALOS	22,78	39,21	14,6	19	8,7	77	213
MYTILINI	26,60	39,05	16,1	19,2	12,3	82	232
VELO	22,77	37,97					
AGRINIO	21,35	38,60					
LAMIA	22,43	38,87					
ANDRAVIDA	21,28	37,92	14,7	18,8	9,5	62	210
SKYROS	24,48	38,96	15,1	18	12,1	41	220
ARGOSTOLI	20,50	38,12	14,9	18	10,7	101	262
ARAXOS	21,42	38,15	15,1	19,1	9,7	51	270
TANAGRA	23,57	38,33	14,8	19,3	8,1	53	236
HIOS	26,13	38,35	15,8	18,7	10,8	88	242
PYRGOS	21,42	37,67					
TRIPOLI	22,40	37,52	11,2	16,5	4	52	217
TATOI	23,78	38,10					
HELLINIKO	23,73	37,90	16,9	21,5	12,8	9	227
ELEYSINA	23,55	38,07	16,5	20,4	11,2	24	
ZAKYNTHOS	20,88	37,75	15,4	19,1	9,4	55	258
SAMOS	26,92	37,68	16,4	19,5	11,9		
ARGOS	22,75	37,63					
KALAMATA	22,02	37,07	15,1	20,3	8,3	37	250
NAXOS	25,37	37,10					
METHONI	21,70	36,82					
MHLOS	24,43	36,73					
SPATA	23,95	37,95					
KOS	27,08	36,80	16,4	18,5	14,2	14	
KYTHIRA	22,98	36,15					
SANTORINI	25,41	36,41					
SOUDA	24,12	35,55	15,9	19,2	12,2	18	237
RODOS	28,08	36,40	17,4	20,1	14,8	16	266
MYKONOS	25,35	37,43	15,6	18,2	13,6	38	
HRAKLEIO	25,18	35,33	16,7	19,8	12,8	42	256
IERAPETRA	25,73	35,02					
SITEIA	26,10	35,21	16	17,9	13,6	18	66
RETHYMNO	24,50	35,36					
TYMPAKI	24,76	35,06					
KASTELI	25,33	35,18	14,5	18,6	10,3	27	226
KARPATOS	27,15	35,42	17,2	19,5	15,8	16	
PAROS	25,13	37,02	16,6	19,5	12,6	14	267
SYROS	24,95	37,42	16,2	19,5	13,3	16	266
IKARIA	26,35	37,68					

11,314,58,13617810,214,16,45611,314,57,89612510,713,7820210,5165,88616112,715,410,232137

**TABLE OF DEVIATIONS  
FROM NORMAL VALUES**

<b>STATION</b>	<b>TMEAN ( deviation ) (I)</b>	<b>PRECI (deviation % ) (II)</b>
SERRES	0	157
FLORINA		
THESSALONIKI	0,6	222
ALEXANDROUPOLI	0,4	121
KOZANI	-1	204
KERKYRA	-0,1	159
IOANNINA	-1	104
LARISA	0,2	166
LIMNOS	0,3	291
AGHIALOS	0,4	223
MYTILINI	0,3	175
AGRINIO		
SKYROS	-0,1	186
ARGOSTOLI	-0,5	170
ARAXOS	-0,3	123
HIOS	0,5	214
HELLINIKO	0,9	36
ZAKYNTHOS	-0,1	107
SAMOS	0,3	-
KALAMATA	-0,3	78
NAXOS		
METHONI		
SANTORINI		
SOUDA	0,1	57
RODOS	0,7	67
HERAKLIO	0,1	140
SITIA	-0,8	66

(I) deviation of mean temperature from normal values  
 (II) deviation of monthly precipitation height from normal values %.

# Climatic Bulletin

## General Description

Precipitation amounts were higher than normal values over the west, central and north parts.  
The mean temperature varied close to normal values.

### Climatic Parameters :

- ❖ **Normal Values** : normal values for various parameters (temperature, precipitation, etc) are defined as mean values calculated for 30 years. These normal values are used as basis and represent the mean situation. They can be specified in 10 daily, monthly, seasonally and yearly level and are used for the trend comparison of 10 days, month, season or year as: rainy decameron, mild winter, cool August etc.

### Measurement :

- ❖ **Precipitation**  
1 mm = 1 litre/m<sup>2</sup>

### Table Legend :

Tmean : Mean Temperature  
TN : Minimum Temperature  
TX : Maximum Temperature  
RR : Precipitation height(mm)  
INST : Sun Duration (hours)

### UTC hours (Universal Time Coordinates) in Greece :

- ❖ Winter : UTC hour = local hour - 2
- ❖ Summer : UTC hour = local hour - 3

© Hellenic National Meteorological Service  
Reproduction is prohibited without written authorization  
14 El.Venizelou 16777  
Helliniko, Athens  
Greece