




Climatic Bulletin

June 2023

 **Max
temperature**

 **Min
temperature**

 **Mean
temperature**

 **Precipitation**

 **Sunshine
duration**

June was cooler than normal levels mainly over the central and north parts of Greece.
Also the mean precipitation values were higher than normal ones in general.
Meanwhile hailstone recorded locally over mainland causing damages in farming.



Temperature

First 10-day period

More specific (varied) :

Minimum:

from 8.6°C to 18°C over north mainland,
 from 10°C to 20°C over central mainland,
 from 16°C to 21°C over rest parts.

Maximum:

from 20°C to 32.8°C over north mainland,
 from 22°C to 32.3°C over central mainland,
 from 23°C to 28°C over rest parts.

Second 10-day period

More specific (varied) :

Minimum:

from 9°C to 20°C over north mainland,
 from 11°C to 21°C over central mainland,
 from 17°C to 22°C over rest parts.

Maximum:

from 17°C to 32°C over north mainland,
 from 18°C to 32°C over central mainland,
 from 22°C to 29°C over rest parts.

Third 10-day period

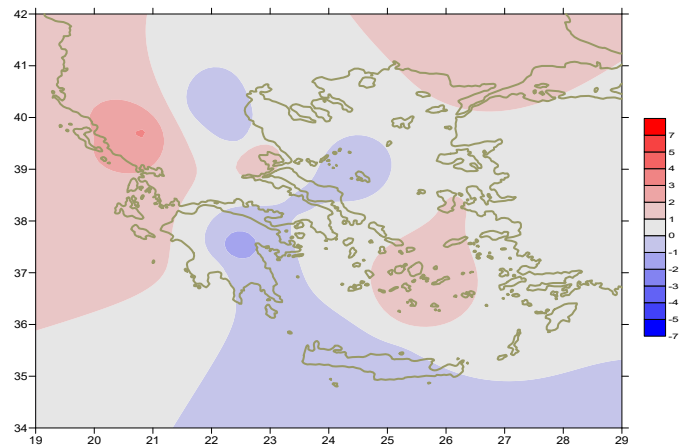
More specific (varied) :

Minimum:

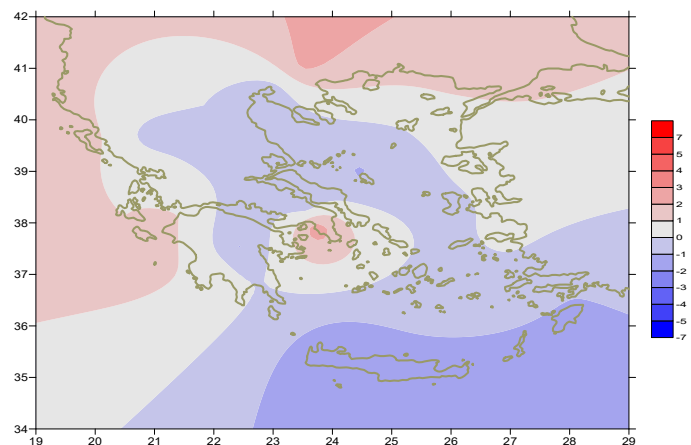
from 11°C to 23°C over north mainland,
 from 13°C to 24°C over central mainland,
 from 18°C to 24°C over rest parts.

Maximum:

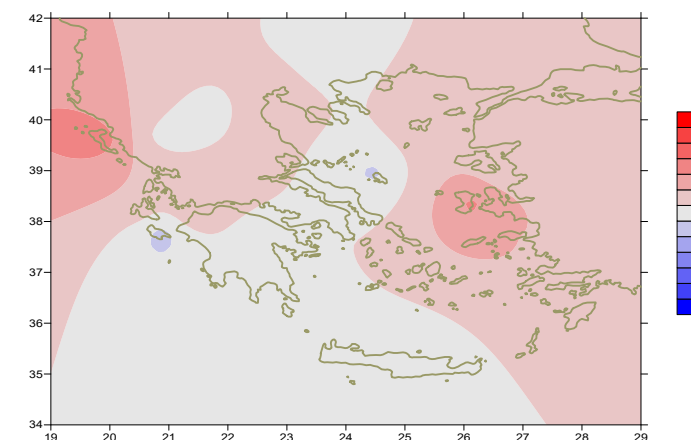
from 25°C to 36°C over north mainland,
 from 28°C to 36.7°C over central mainland,
 from 29°C to 33.8°C over rest parts.



Deviation of mean temperature from normal values



Deviation of maximum temperature from normal values



Deviation of minimum temperature from normal values



P r e c i p i t a t i o n

First 10-day period

Locally large amounts of precipitation.

More specific:

8mm in Souda (1/6),
12mm in Astipalea, 21mm in Santorini, 40mm in Heraklion,
18mm in Sitia, 15mm in Souda, 18mm in Kasteli, 47mm in Gavdos,
8mm in Chios, 22mm in Karpathos, 7mm in Kos (2/6),
16mm in Kozani, 28mm in Ioannina, 24mm in Kastelorizo (3/6),
18mm in Thessaloniki, 6mm in Tripoli (4/6),
8mm in Ioannina (5/6), 6mm in Doxato (9/6).

Second 10-day period

Locally large amounts of precipitation.

More specific:

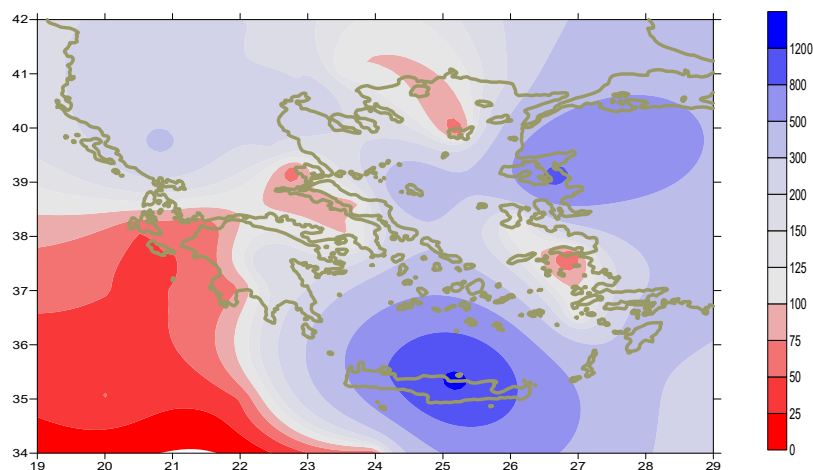
26mm in Ioannina, 16mm in Larisa, 24mm in Thessaloniki (11 /6),
18mm in Kerkira (12/6), 10mm in Hellinikon (13/6), 11mm in Kastoria (15/6),
14mm in Ioannina, 29mm in Kastoria (16/6),
42mm in Thessaloniki, 16mm in Polikastro, 18mm in Kastoria,
15mm in Skiathos, 14mm in Argos, 40mm in Mitilini, 10mm in Spata (17/6),
24mm in Alexandroupoli, 20mm in Lamia, 18mm in Sofades,
27mm in Opeoi, 16mm in Karistos, 18mm in Skiros, 10mm in Leonidio,
21mm in Ikaria, 11mm in Hellinikon, 10mm in Kotroni (18/6).

Third 10-day period

Significant amounts of precipitation locally over north parts

More specific:

11mm in Ioannina, 18mm in Konitsa (23/6),
33mm in Serres, 10mm in Polikastro, 29mm in Siros (24/6),
9mm in Antirio, 9mm in Messologi, 14mm in Tripoli (25/6),
20mm in Ioannina, 10mm in Kozani (26/6),
12mm in Ormenio (29/6).



*Deviation of monthly precipitation height
from normal values (%)*

TABLE OF MEAN VALUES

STATION	Longitude	Lattitude	Tmean	TX	TN	RR	INST
SERRES	23,53	41,07	24,6	31,8	16,6	45	274
FLORINA	21,40	40,78					
KASTORIA	21,27	40,45	20,7	26,4	13,2	84	220
TRIKALA_IMATHIAS	22,55	40,60					
THESSALONIKI	22,97	40,52	24,7	28,4	17,9	90	276
CHRYSOUPOLI	24,62	40,92	24	27,5	17,1	3	271
ALEXANDROUPOLI	25,95	40,85	24,4	28,4	16,2	43	310
KOZANI	21,83	40,28	20,5	26,2	13,7	65	
KERKYRA	19,92	39,62	25,7	29,2	19,8	22	300
IOANNINA	20,82	39,70	21,5	27,4	13,4	156	236
PREVEZA	20,76	38,91	24,5	28,4	19,8	12	
TRIKALA_THESSALIAS	21,77	39,52					
LARISA	22,45	39,65	24,5	30,3	16,2	42	223
LIMNOS	25,23	39,92	23,7	26,9	18,7	5	323
ARTA	21,00	39,17					
AGHIALOS	22,78	39,21	24,6	28,7	17,4	11	289
MYTILINI	26,60	39,05	25,3	28,9	20,5	54	317
VELO	22,77	37,97					
AGRINIO	21,35	38,60					
LAMIA	22,43	38,87					
ANDRAVIDA	21,28	37,92	24,6	29	17,7	5	230
SKYROS	24,48	38,96	23	25	19,1	24	305
ARGOSTOLI	20,50	38,12	24,4	27,2	19,7	3	334
ARAXOS	21,42	38,15	25	29,2	18,2	4	336
TANAGRA	23,57	38,33	24,8	29,4	16,3	13	299
HIOS	26,13	38,35	25	27,4	20,4	12	318
PYRGOS	21,42	37,67					
TRIPOLI	22,40	37,52	20,2	26,5	12,3	42	242
TATOI	23,78	38,10					
HELLINIKO	23,73	37,90	25,7	31,1	21	5	294
ELEYSINA	23,55	38,07	26,2	30,5	20,7	25	
ZAKYNTHOS	20,88	37,75	25,6	29,3	17,8		337
SAMOS	26,92	37,68	25,8	29,6	20,2		
ARGOS	22,75	37,63					
KALAMATA	22,02	37,07	24,7	29,5	16,9	4	304
NAXOS	25,37	37,10					
METHONI	21,70	36,82					
MHLOS	24,43	36,73					
SPATA	23,95	37,95	24,6	28,2	18,1	19	
KOS	27,08	36,80	23,8	26,8	20,6	7	
KYTHIRA	22,98	36,15					
SANTORINI	25,41	36,41					
SOUDA	24,12	35,55	23,6	26,8	19,2	36	345
RODOS	28,08	36,40	24,9	27,3	21,7	12	356
MYKONOS	25,35	37,43					
HRAKLEIO	25,18	35,33	23,8	26	19,2	42	354
IERAPETRA	25,73	35,02					
SITEIA	26,10	35,21	23	25,2	20,8	50	340
RETHYMNO	24,50	35,36					
TYMPAKI	24,76	35,06					
KASTELI	25,33	35,18	22,6	26	17,8	51	312
KARPATOS	27,15	35,42	23,7	26,4	21,9	23	
PAROS	25,13	37,02	24,1	27,1	19,8		352
SYROS	24,95	37,42	24	27,1	21,1	2	326
IKARIA	26,35	37,68					

11,314,58,13617810,214,16,45611,314,57,89612510,713,7820210,5165,88616112,715,410,232137

**TABLE OF DEVIATIONS
FROM NORMAL VALUES**

STATION	TMEAN (deviation) (I)	PRECI (deviation %) (II)
SERRES	0,7	102
FLORINA		
THESSALONIKI	0,5	285
ALEXANDROUPOLI	1,3	158
KOZANI	-0,8	168
KERKYRA	1,9	154
IOANNINA	-0,2	333
LARISA	-0,4	179
LIMNOS	0,4	23
AGHIALOS	0,2	52
MYTILINI	0,7	900
AGRINIO		
SKYROS	-0,7	462
ARGOSTOLI	1,2	14
ARAXOS	1	44
HIOS	1,1	78
HELLINIKO	0,7	83
ZAKYNTHOS	1,5	1
SAMOS	0,6	1
KALAMATA	0,6	62
NAXOS		
METHONI		
SANTORINI		
SOUDA	-0,8	783
RODOS	0,2	414
HERAKLIO	-0,5	1313
SITIA		

(I) deviation of mean temperature from normal values
 (II) deviation of monthly precipitation height from normal values %.

Climatic Bulletin

General Description

Precipitation amounts were higher than normal values over most parts and mainly over mainland and Crete. The mean temperature varied lower than normal values in general.

Climatic Parameters :

- ❖ **Normal Values** : normal values for various parameters (temperature, precipitation, etc) are defined as mean values calculated for 30 years. These normal values are used as basis and represent the mean situation. They can be specified in 10 daily, monthly, seasonally and yearly level and are used for the trend comparison of 10 days, month, season or year as: rainy decameron, mild winter, cool August etc.

Measurement :

- ❖ **Precipitation**
1 mm = 1 litre/m²

Table Legend :

Tmean : Mean Temperature
 TN : Minimum Temperature
 TX : Maximum Temperature
 RR : Precipitation height(mm)
 INST : Sun Duration (hours)

UTC hours (Universal Time Coordinates) in Greece :

- ❖ Winter : UTC hour = local hour - 2
- ❖ Summer : UTC hour = local hour - 3

© Hellenic National Meteorological Service
 Reproduction is prohibited without written authorization
 14 El.Venizelou 16777
 Helliniko, Athens
 Greece