




# Climatic Bulletin

July 2023

 **Max  
temperature**

 **Min  
temperature**

 **Mean  
temperature**

 **Precipitation**

 **Sunshine  
duration**

July was a very hot month, the mean T values of which exceeded the normal values by 2 to 3.5 degrees Celsius over the whole country, due to the continuous transport of extremely hot air masses to Greece for a period of 15 days.

As a result of that a significant heat wave recorded from 12<sup>th</sup> to 26<sup>th</sup> of July. The one characteristic was the very high Tmax values and the other one was the high Tmin values which climbed up to 30 degrees Celsius.

All the above tough conditions in combination with high values of relative humidity caused the general discomfort.



# Temperature

### First 10-day period

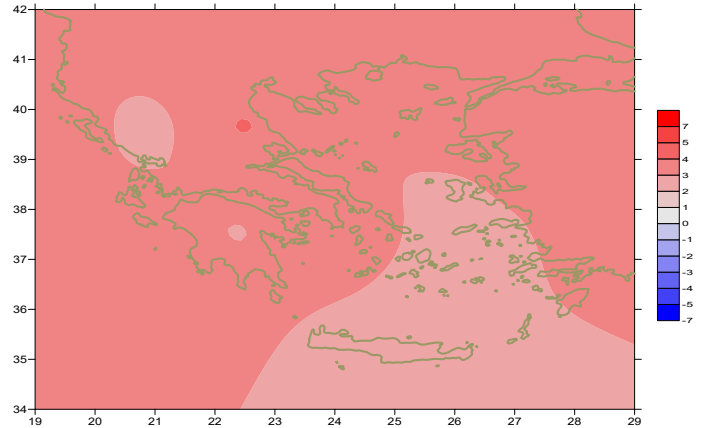
More specific (varied) :

**Minimum:**

from 10°C to 24°C over north mainland,  
 from 14°C to 27°C over central mainland,  
 from 15°C to 26°C over rest parts.

**Maximum:**

from 28°C to 36.6°C over north mainland,  
 from 29°C to 39.7°C over central mainland,  
 from 26°C to 35°C over rest parts.



*Deviation of mean temperature from normal values*

### Second 10-day period

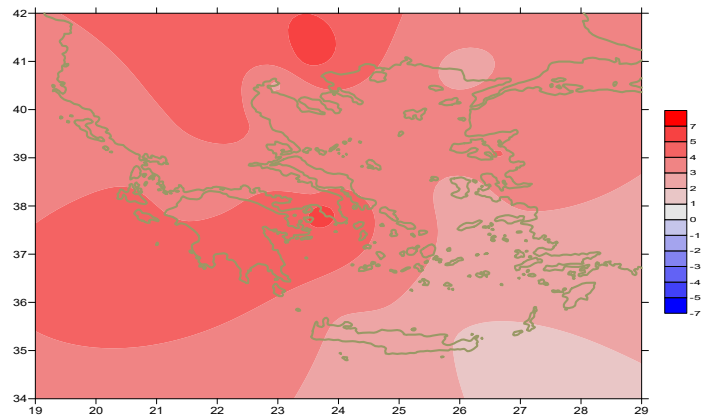
More specific (varied) :

**Minimum:**

from 10°C to 26.4°C over north mainland,  
 from 15°C to 29.9°C over central mainland,  
 from 17°C to 31.4°C over rest parts.

**Maximum:**

from 31°C to 40.9°C over north mainland,  
 from 30°C to 41.7°C over central mainland,  
 from 28°C to 40°C over rest parts.



*Deviation of maximum temperature from normal values*

### Third 10-day period

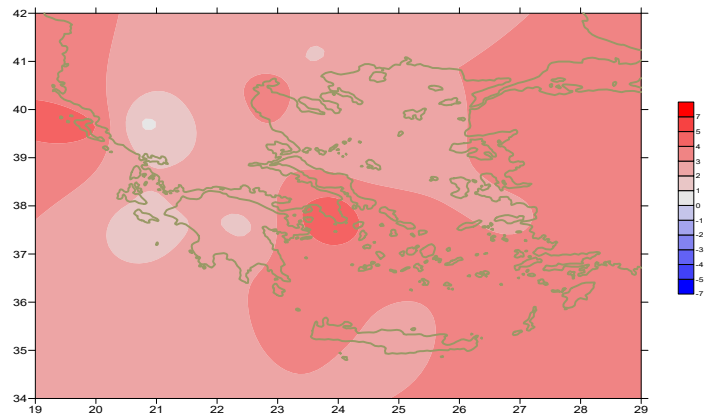
More specific (varied) :

**Minimum:**

from 11°C to 26.3°C over north mainland,  
 from 16°C to 31.4°C over central mainland,  
 from 22°C to 31.7°C over rest parts.

**Maximum:**

from 28°C to 40.8°C over north mainland,  
 from 29°C to 45.7°C over central mainland,  
 from 29°C to 39°C over rest parts.



*Deviation of minimum temperature from normal values*



## Precipitation

### First 10-day period

Locally large amounts of precipitation.

More specific:

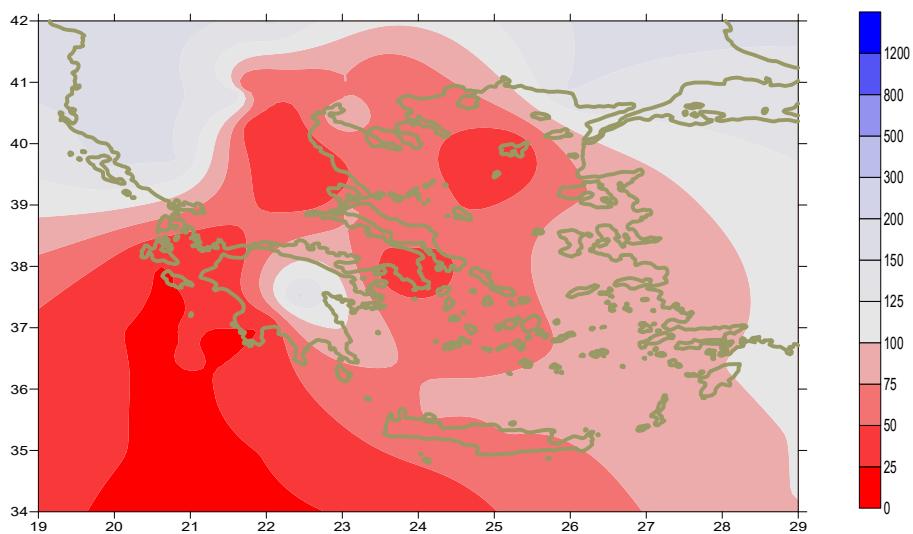
4mm in Polikastro (1/7),  
 6mm in Kastoria, 11mm in Kerkira, 34mm in Othonoi (2/7),  
 15mm in Alexandroupoli, 31mm in Elefsina, 29mm in Tripoli (3/7),  
 42mm in Polikastro, 16mm in Thessaloniki, 4mm in Doxato, 7mm in Kranea (5/7),  
 26mm in Kavala/Chrisoupoli, 9mm in Kavala/TEI, 10mm in Doxato (6/7).

### Second 10-day period

Lack of precipitation.

### Third 10-day period

Lack of precipitation.



*Deviation of monthly precipitation height  
 from normal values (%)*

TABLE OF MEAN VALUES

STATION	Longitude	Latitude	Tmean	TX	TN	RR	INST
SERRES	23,53	41,07	29,9	37,5	20,3	8	311
FLORINA	21,40	40,78					
KASTORIA	21,27	40,45	27	33,9	15,9	8	358
TRIKALA_IMATHIAS	22,55	40,60					
THESSALONIKI	22,97	40,52	30	34,2	21,7	16	390
CHRYSOUPOLI	24,62	40,92	27,8	31,7	20,3	49	355
ALEXANDROUPOLI	25,95	40,85	28,7	32,8	20,4	20	371
KOZANI	21,83	40,28	27,7	34,3	18,1	1	
KERKYRA	19,92	39,62	29,8	34	22,6	11	385
IOANNINA	20,82	39,70	27,3	34,5	15,5	34	368
PREVEZA	20,76	38,91	28,2	32,4	22,3	0	
TRIKALA_THESSALIAS	21,77	39,52					
LARISA	22,45	39,65	31,2	37,1	20,5	0	316
LIMNOS	25,23	39,92	28,8	32,3	22,4	0	386
ARTA	21,00	39,17					
AGHIALOS	22,78	39,21	30,4	34,8	21,4	0	376
MYTILINI	26,60	39,05	30,1	34,4	24,8	0	379
VELO	22,77	37,97					
AGRINIO	21,35	38,60					
LAMIA	22,43	38,87					
ANDRAVIDA	21,28	37,92	28,8	34	20,3	0	386
SKYROS	24,48	38,96	28,3	30,9	23,7	0	374
ARGOSTOLI	20,50	38,12	28,8	32,9	22,9	0	393
ARAXOS	21,42	38,15	29,6	34,4	21,1	0	398
TANAGRA	23,57	38,33	31	35,7	21,4	0	392
HIOS	26,13	38,35	29,1	32,6	23,8	0	389
PYRGOS	21,42	37,67					
TRIPOLI	22,40	37,52	27,4	34,4	15,9	30	366
TATOI	23,78	38,10	30,8	35,2	23,4	0	
HELLINIKO	23,73	37,90	31,8	37	27,7	0	388
ELEYSINA	23,55	38,07	32,2	36,7	25,7	0	
ZAKYNTHOS	20,88	37,75	30,6	35,1	21,3	0	406
SAMOS	26,92	37,68	31,3	35,4	25,1	0	
ARGOS	22,75	37,63					
KALAMATA	22,02	37,07	29,8	35,9	21,1	0	379
NAXOS	25,37	37,10					
METHONI	21,70	36,82					
MHLOS	24,43	36,73					
SPATA	23,95	37,95	30,6	34,7	23,3	0	
KOS	27,08	36,80	28,8	32,6	24,9	0	
KYTHIRA	22,98	36,15					
SANTORINI	25,41	36,41					
SOUDA	24,12	35,55	29,2	33,1	23,8	0	384
RODOS	28,08	36,40	30,1	32,8	25,7	0	392
MYKONOS	25,35	37,43	28	30,9	24,8	0	
HRAKLEIO	25,18	35,33	28,8	31,4	24,1	0	393
IERAPETRA	25,73	35,02					
SITEIA	26,10	35,21	28,2	30,4	25,9	0	369
RETHYMNO	24,50	35,36					
TYMPAKI	24,76	35,06					
KASTELI	25,33	35,18	27,8	31,3	22,9	0	353
KARPATHOS	27,15	35,42					
PAROS	25,13	37,02	28,6	31,6	24,2	0	391
SYROS	24,95	37,42					
IKARIA	26,35	37,68					

11,314,58,13617810,214,16,45611,314,57,89612510,713,7820210,5165,88616112,715,410,232137

**TABLE OF DEVIATIONS  
FROM NORMAL VALUES**

STATION	TMEAN	PRECI
	( deviation )	( deviation % )
	(I)	(II)
SERRES	3.8	26
FLORINA		
THESSALONIKI	3.5	63
ALEXANDROUPOLI	3.1	114
KOZANI	3.7	3
KERKYRA	3.4	149
IOANNINA	2.5	119
LARISA	4.1	-
LIMNOS	3.3	-
AGHIALOS	3.7	-
MYTILINI	3.7	-
AGRINIO		
SKYROS	3	-
ARGOSTOLI	3.3	-
ARAXOS	3	-
HIOS	2.7	-
HELLINIKO	4	-
ZAKYNTHOS	3.9	-
SAMOS	2.9	-
KALAMATA	3.3	-
NAXOS		
METHONI		
SANTORINI		
SOUDA	2.8	-
RODOS	3.2	-
HERAKLIO	2.7	-
SITIA	2.2	-

(I) deviation of mean temperature from normal values  
 (II) deviation of monthly precipitation height from normal values %.

# Climatic Bulletin

## General Description

Precipitation amounts were higher than normal values only over few parts of north mainland while over rest parts there was lack of preci.  
The mean temperature varied higher enough than normal values everywhere.

T

### Climatic Parameters :

- ❖ **Normal Values** : normal values for various parameters (temperature, precipitation, etc) are defined as mean values calculated for 30 years. These normal values are used as basis and represent the mean situation. They can be specified in 10 daily, monthly, seasonally and yearly level and are used for the trend comparison of 10 days, month, season or year as: rainy decameron, mild winter, cool August etc.

### Measurement :

- ❖ **Precipitation**  
1 mm = 1 litre/m<sup>2</sup>

### Table Legend :

Tmean : Mean Temperature  
TN : Minimum Temperature  
TX : Maximum Temperature  
RR : Precipitation height(mm)  
INST : Sun Duration (hours)

### UTC hours (Universal Time Coordinates) in Greece :

- ❖ Winter : UTC hour = local hour - 2
- ❖ Summer : UTC hour = local hour - 3

© Hellenic National Meteorological Service  
Reproduction is prohibited without written authorization  
14 El.Venizelou 16777  
Helliniko, Athens  
Greece